



---

PDA SLIDING DOOR AND FOLDING DOOR SYSTEM

---



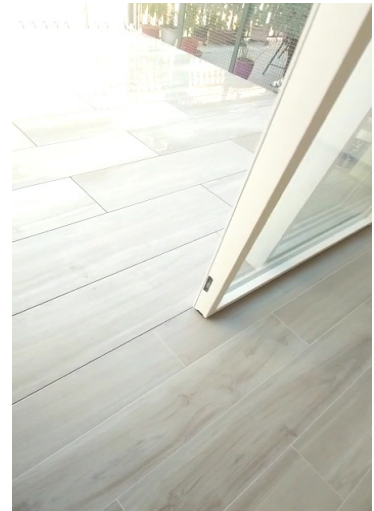


## **PDA 7025 CONCEALED TOP TRACK ELECTRIC LIFT-AND-SLIDE DOOR SYSTEM**

### **PDA Concealed Top Track Electric Lift-and-Slide Door Product Description:**

The frame is made from steel thermal break energy-efficient profiles, offering high strength and thermal insulation. The ultra-narrow frame design maximizes the light opening, allowing for abundant natural light. Both the top track and side frames feature a concealed design, further enhancing the visible light area. The lift-and-slide function, combined with an electric control hardware system, ensures effortless operation. The trackless design improves ground accessibility.

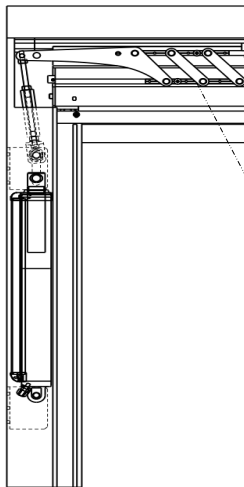
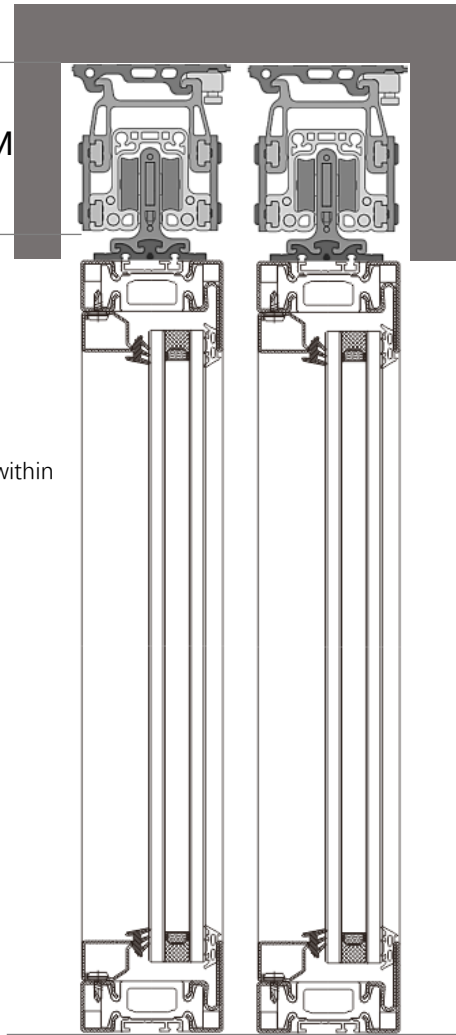
MAX  
**400KG**



PDA 7025 CONCEALED TOP TRACK ELECTRIC  
LIFT-AND-SLIDE DOOR



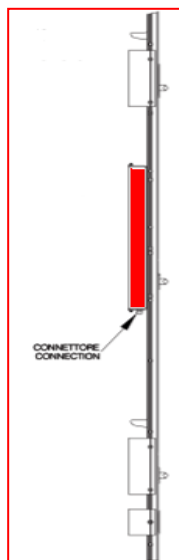
115MM



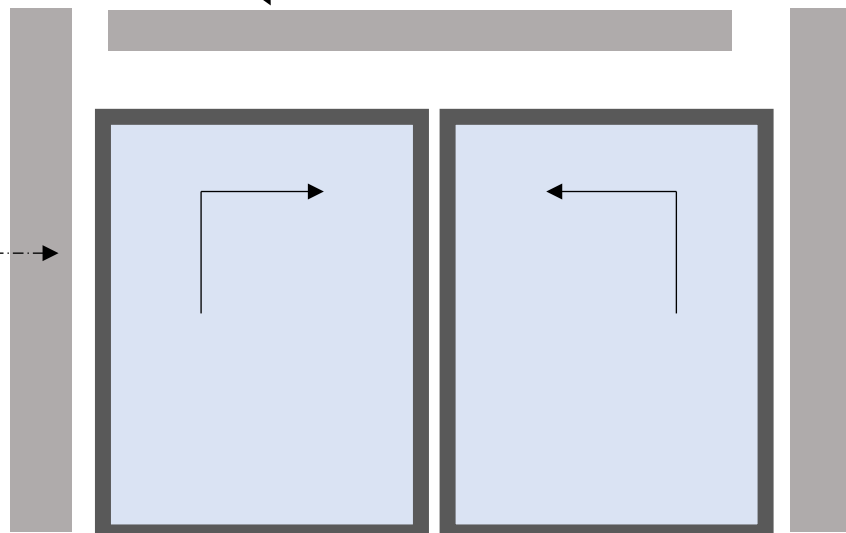
The lifting lever module is concealed within  
the top track

The lifting linkage is concealed on the side

Automation into the frame



CONNECTORE  
CONNECTION





## PDA STEEL MANUAL LIFT-AND-SLIDE DOOR SYSTEM

### PDA Steel Lift-and-Slide Door Product Description:

The frame is constructed from steel thermal break energy-efficient profiles, providing high strength and thermal insulation. The ultra-narrow frame design maximizes the light opening, allowing for expansive natural light.

**Glass Thickness Range:** 25mm - 45mm

**Maximum Single Panel Dimensions:**  $W \leq 2500\text{mm}$ ,  $H \leq 3000\text{mm}$

**Stainless Steel Frame Option Available.**

**Overall Single Panel Weight Capacity:** 300kg.

**Utilizes specialized lift-and-slide hardware for superior sealing performance.**

MAX  
**300KG**

## PDA 7025 STEEL MANUAL LIFT-AND-SLIDE DOOR SYSTEM

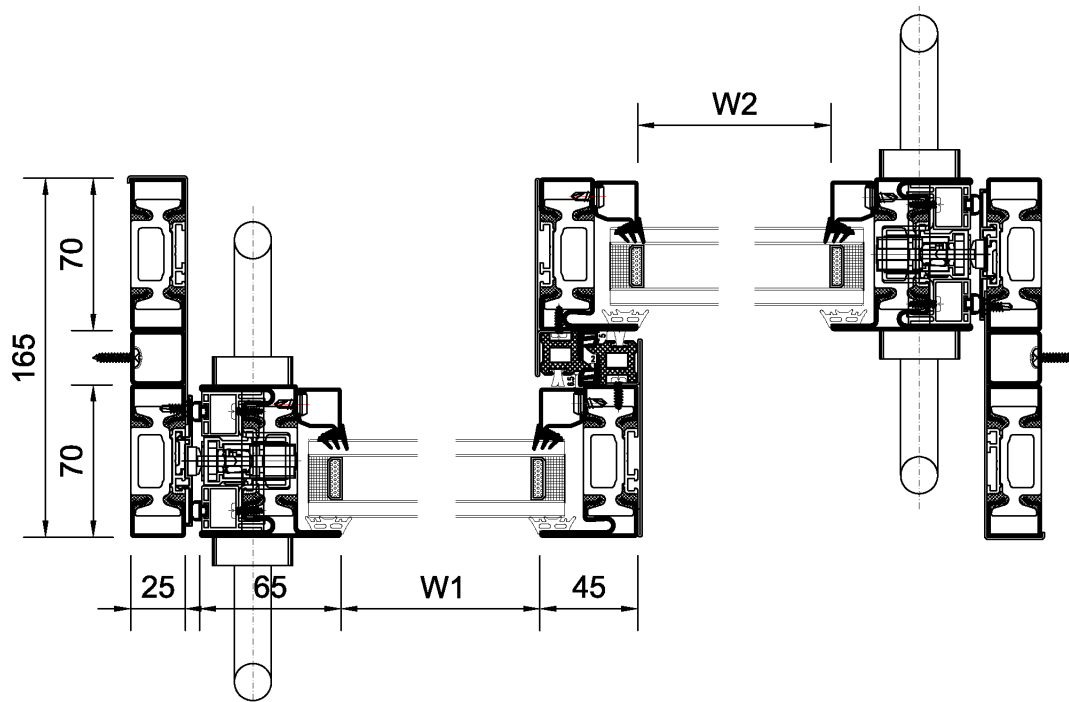
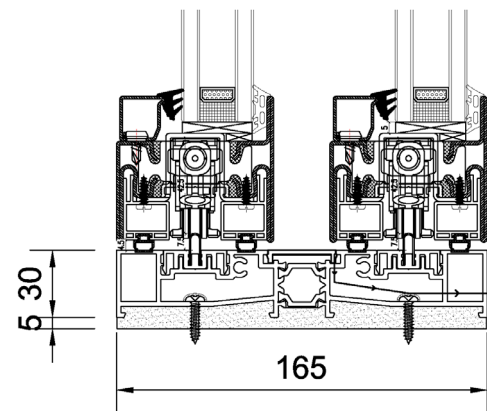
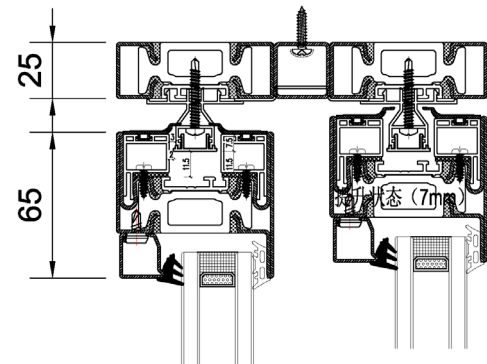
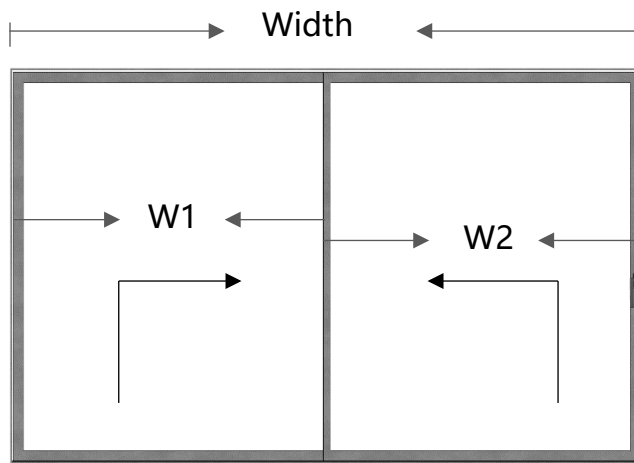
### Ultra-Narrow Frame Design

Visible width: 45mm

### Maximum Size

### Specifications

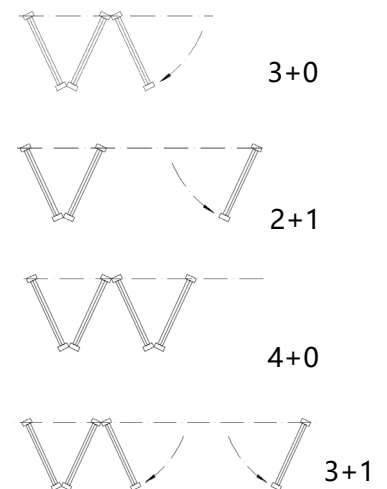
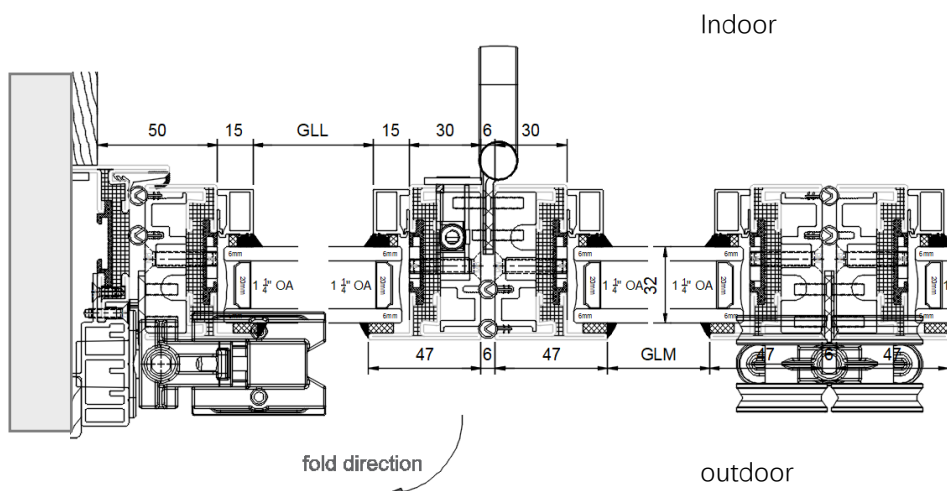
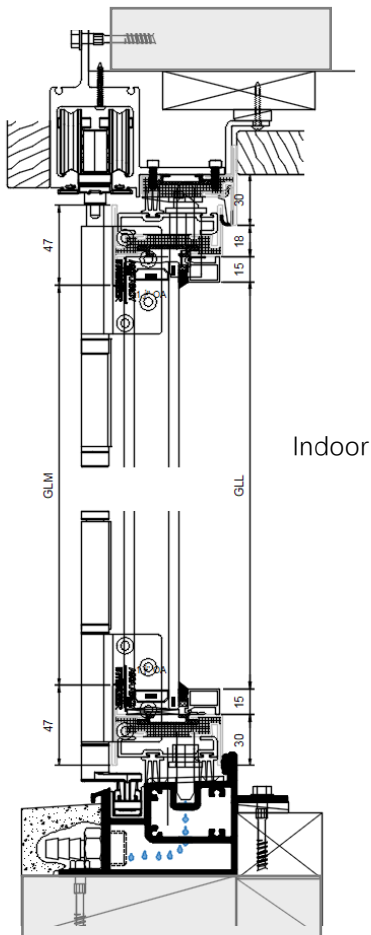
$W \leq 2500\text{mm}$ ,  $H \leq 3000\text{mm}$ .



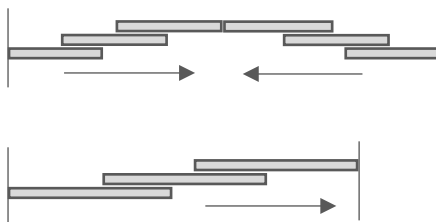


## SLIM65 STEEL FOLDING DOOR SYSTEM

### Node details

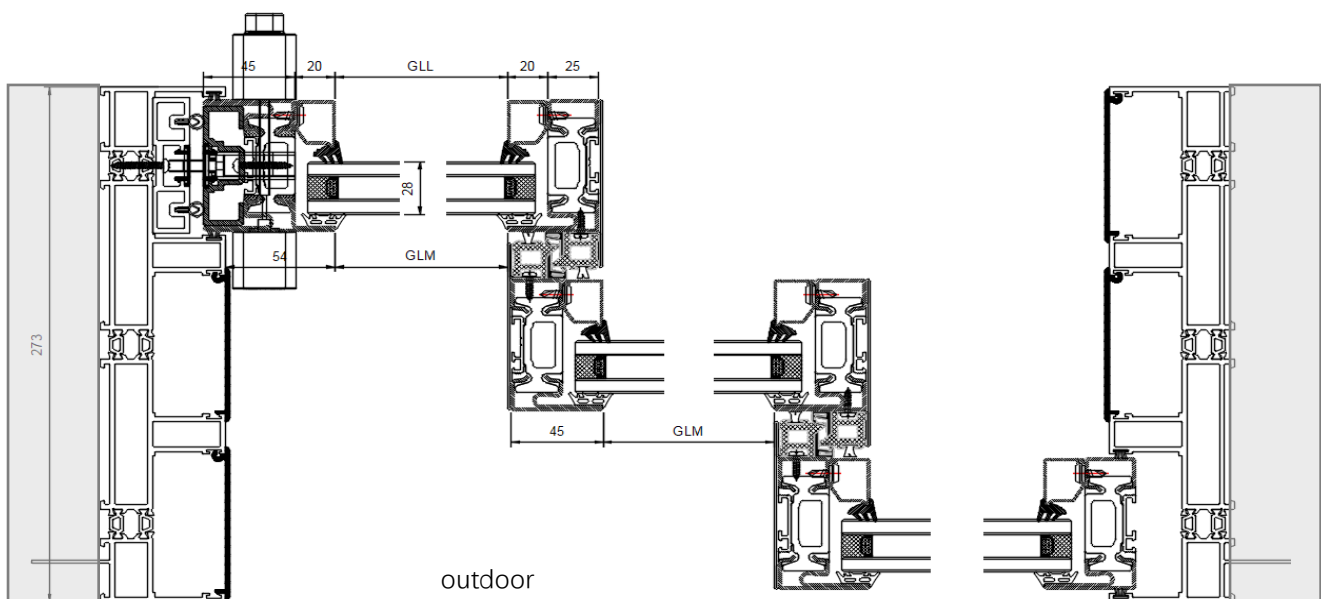
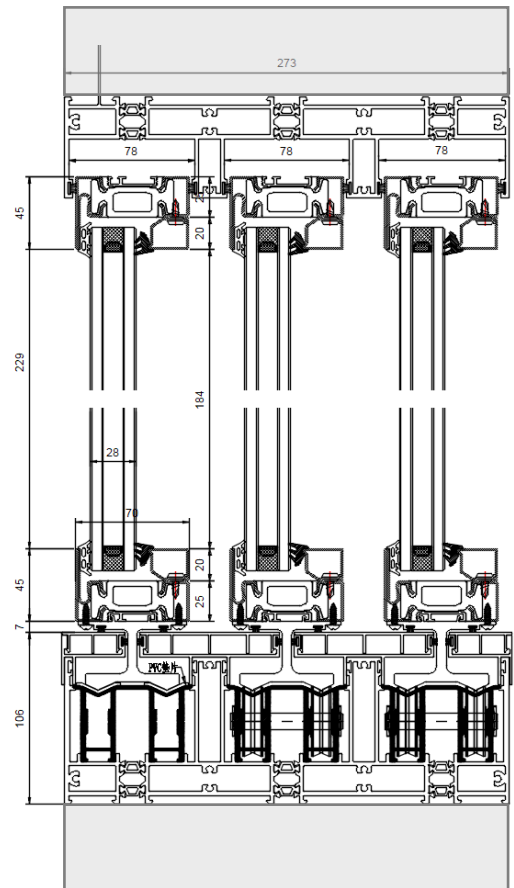


7025 STEEL MULTI-TRACK SLIDING DOOR SYSTEM  
Node details



Bi-Directional Multi-Track Door

Uni-Directional Multi-Track Door







PDA website: [www.international-pda.com](http://www.international-pda.com)

contact: International Business Manager: **Yini Tao**

E-mail: [taoyini@eng-pda.com](mailto:taoyini@eng-pda.com)

Marketing Manager: **Nancy Zhao**

E-mail: [zhn@eng-pda.com](mailto:zhn@eng-pda.com)